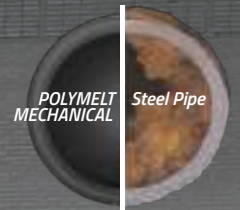


NO RUST. NO DEPOSITS.
MECHANICAL PP-RCT
PIPE SYSTEM.



MECHANICAL GRAY

© MECHANICAL MECHANICAL

© MECHANICAL MECHANICAL

FOR HIGH OPERATIONAL SAFETY OVER DECADES



POLYMELT'S MECHANICAL GRAY PP-RCT PIPING SYSTEM. LOOKS LIKE STEEL BUT WITHOUT THE RUST.

PP-RCT PIPES & FITTINGS. AVAILABLE DIMENSIONS.

Imperial nominal Ø	Metric Ø	SDR 7.4	SDR 11	SDR 17.6
1/2"	20 mm	✓	-	-
3/4"	25 mm	✓	-	-
1"	32 mm	-	✓	-
1 1/4"	40 mm	-	✓	-
1 1/2"	50 mm	-	✓	-
2"	63 mm	-	✓	-
2 1/2"	75 mm	-	✓	-
3"	90 mm	-	✓	-
3 1/2"	110 mm	-	✓	-
4"	125 mm	-	✓	✓
6"	160 mm	-	✓	✓
8"	200 mm	-	✓	✓
10"	250 mm	-	✓	✓
12"	315 mm	-	✓	✓
14"	355 mm	-	✓	✓
16"	400 mm	-	✓	✓
18"	450 mm	-	✓	✓
20"	500 mm	-	-	✓

CONFIRMED PRESSURE RATINGS FOR WATER AND OTHER LIQUID APPLICATIONS.

Temp. (°C)	Pressure SDR 11	Pressure SDR 17.6
10 °C	21,2 bar	12,7 bar
20 °C	18,4 bar	11,0 bar
30 °C	15,8 bar	9,5 bar
40 °C	13,6 bar	8,1 bar
50 °C	11,5 bar	6,9 bar
60 °C	9,7 bar	5,8 bar
70 °C	8,1 bar	4,9 bar
80 °C	6,9 bar	-



- Multi-layer fiber composite pipe
- Longer fixing distances thanks to higher stability
- Reduced overall expansion by 75%

UP TO
80% LIGHTER
THAN STEEL



Pipe Size	Weight (kg/m) SCH 40 Steel	Weight (kg/m) SDR 11 PP-RCT	Weight (kg/m) SDR 17.6 PP-RCT
32 mm	2,5	0,27	-
40 mm	3,39	0,43	-
50 mm	4,05	0,66	-
63 mm	5,44	1,05	-
75 mm	8,63	1,47	-
90 mm	11,29	2,11	-
110 mm	13,57	3,01	-
125 mm	16,07	4,07	2,65
160 mm	28,26	6,67	4,34
200 mm	42,55	10,40	6,76
250 mm	60,31	16,22	10,50
315 mm	79,73	25,58	16,64
355 mm	94,55	32,45	21,11
400 mm	123,3	41,18	27,67
450 mm	155,8	52,10	35,90
500 mm	183,5	-	45,87



Standards: DIN 8077/78, EN ISO 15874, ASTM 2389, NSF14
Approval: ICC ES product certification

Polymelt Mechanical PP RCT has a natural insulation value that reduces heat gain and often prevents condensation, making it ideal for cooling towers and condenser water. Its multi-layer composite extrusion technology minimizes linear expansion and resists corrosion, enhancing performance and extending service life. This pipe can be safely buried in soil, sand, or concrete, is available in diameters up to 500 mm, and is heat-stabilized, making it perfect for geothermal applications.

Unlike metal, this corrosion-free alternative avoids the efficiency losses and increased pumping energy costs caused by corrosion and scaling in steel pipes. Mechanical PP RCT pipes maintain efficiency and performance over time without corroding or scaling.

THE PERFECT PP-RCT PIPES FOR YOUR PROJECT.

Polymelt's Mechanical Gray PP-RCT pipes are the preferred alternative for steel pipes in:

- Chilled water
- Condenser water
- Heating water
- Process Water
- District Cooling
- District Heating
- Glycol
- And many more

Polymelt's Mechanical Gray PP-RCT Pipes are ideal for projects such as:

- Higher Education
- Data Centers
- Aviation
- Manufacturing
- Government Facilities
- Healthcare
- Hospitality
- Commercial



WHY POLYMELT'S PP-RCT MECHANICAL GRAY PIPES

✓ Less costs

- No corrosion protection needed
- No maintenance costs
- Low operation costs

✓ No corrosion

- Low condensation on surface
- No corrosion inside & outside
- Long lifetime

✓ Easy handling

- Weight up to 80 % less
- 3 times faster connection
- Low error rate