

NO RUST. NO SCALE. POLYMELT.
EXPERIENCE IN PLASTICS SINCE 1947.



 **POLYMELT**

MINIMUM 50 YEAR LIFE EXPECTANCY

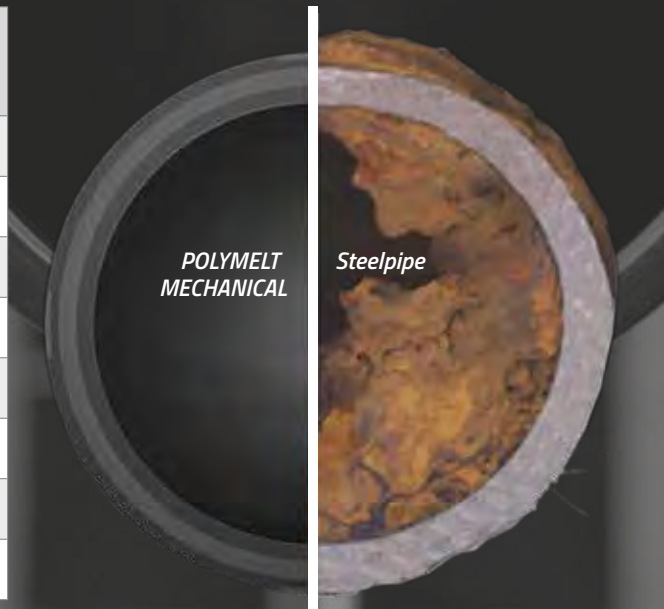
For Systems With Constant Operating Parameters

INTRODUCING POLYMELT'S
MECHANICAL GRAY PP-RCT PIPING SYSTEM.

CONFIRMED PRESSURE
RATINGS FOR WATER AND
LIQUID APPLICATIONS.

Temp. (°F)	Pressure SDR 11	Pressure SDR 17.6
50 °F	305 PSI	185 PSI
80 °F	240 PSI	145 PSI
100 °F	205 PSI	120 PSI
120 °F	170 PSI	100 PSI
140 °F	140 PSI	85 PSI
160 °F	115 PSI	70 PSI
180 °F	95 PSI	-
200 °F	80 PSI	-

NO RUST.
NO SCALE.



- MULTI-LAYER FIBER COMPOSITE PIPE
- APPROXIMATELY 20% GLASS FIBERS IN MIDDLE LAYER
- REDUCES OVERALL EXPANSION BY 75%

LOOKS LIKE STEEL BUT WITHOUT THE RUST.

UP TO 80% LIGHTER THAN STEEL.



Pipe Size	Weight per Ft. SCH 40 Steel	Weight per Ft. SDR 11 PP-RCT	Weight per Ft. SDR 17.6 PP-RCT
2"	3.66 lbs	0.68 lbs	-
2 1/2"	5.80 lbs	0.95 lbs	-
3"	7.58 lbs	1.36 lbs	-
4"	10.80 lbs	2.63 lbs	1.71 lbs
6"	18.99 lbs	4.31 lbs	2.8 lbs
8"	28.58 lbs	6.72 lbs	4.37 lbs
10"	40.52 lbs	10.48 lbs	6.79 lbs
12"	49.61 lbs	16.56 lbs	10.75 lbs
14"	54.62 lbs	20.97 lbs	13.64 lbs
16"	62.64 lbs	27.2 lbs	19.89 lbs
18"	70.65 lbs	34.7 lbs	25.18 lbs
20"	78.67 lbs	-	31.1 lbs



POLYMELT WARRANTY

PP-RCT PIPES & FITTINGS. AVAILABLE DIMENSIONS.

Nominal Diameter	Metric Diameter	SDR 7.4	SDR 11	SDR 17.6
1/2"	20 mm	1/2"	-	-
3/4"	25 mm	3/4"	-	-
1"	32 mm	-	1"	-
1 1/4"	40 mm	-	1 1/4"	-
1 1/2"	50 mm	-	1 1/2"	-
2"	63 mm	-	2"	-
2 1/2"	75 mm	-	2 1/2"	-
3"	90 mm	-	3"	-
4"	125 mm	-	4"	4"
6"	160 mm	-	6"	6"
8"	200 mm	-	8"	8"
10"	250 mm	-	10"	10"
12"	315 mm	-	12"	12"
14"	355 mm	-	14"	14"
16"	400 mm	-	16"	16"
18"	450 mm	-	18"	18"
20"	500 mm	-	-	20"



THE PERFECT PP-RCT PIPES FOR YOUR PROJECT.

Polymelt's Mechanical Gray PP-RCT pipes are the preferred alternative for steel pipes in:

- Chilled water
- Condenser water
- Heating water
- Process Water
- District Cooling
- District Heating
- Glycol
- And many more

Polymelt's Mechanical Gray PP-RCT Pipes are ideal for projects such as:

- Higher Education
- Data Centers
- Aviation
- Manufacturing
- K-12 Education
- Government Facilities
- Healthcare
- Hospitality
- Commercial

EXPERIENCE IN PLASTICS & EXTRUSION SINCE 1947.
EXPERIENCE IN PP-R/PP-RCT SINCE 1978.



POLYMELT EXPERTS NORTH AMERICA



Glen Miller
+1 469 387 6132
glen.miller@polymelt-america.com



Michael LeBlanc
+1 281 300 9343
michael.leblanc@polymelt-america.com



Mike Engle
+1 817 269 3648
mike.engle@polymelt-america.com



Tony Blair
+1 717 808 4671
tony.blair@polymelt-america.com

POLYMELT America
15415 International Plaza Drive, Suite 200
Houston, TX77032

T. +1 832 648 7800
E. support@polymelt-america.com
W. www.polymelt-america.com